

Price List dated July 2023

| Products | Order number | Net Price [€] |
|---|-----------------|---------------|
| Evaporator for organic material | | |
| TCEorg 3-cell eva with shutter and cooling | TCEorg-3SC | 11,610.00 |
| TCEorg 3-cell eva with z-travel, shutter, cooling | TCEorg-3BSC | 14,380.00 |
| TCEorg 3-cell eva special short version with z-travel, shutter, cooling | TCEorg-3BSck | 14,730.00 |
| TCEorg 3-cell eva with 5x crucible volume with shutter and cooling | TCEorg-3SC 5x | 12,900.00 |
| TCEorg 3-cell eva with 5x crucible volume z-travel, shutter, cooling | TCEorg-3BSC 5x | 15,670.00 |
| TCEorg 3-cell eva special short version with 5x crucible volume, z-travel, shutter, cooling | TCEorg-3BSck 5x | 16,020.00 |
| TCEorg 4-cell eva with shutter | TCEorg-4S | 11,770.00 |
| TCEorg 4-cell eva with shutter and z-travel | TCEorg-4BS | 14,540.00 |
| TCEorg 4-cell eva special short version with shutter and z-travel | TCEorg-4BSk | 14,890.00 |

stroke of the bellow 170 mm, other strokes and "in vacuum lengths" on request

Accessories for Evaporators

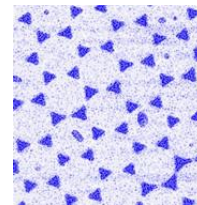
| | | |
|---|--------|------------|
| Power supply 1 for TCEorg, 1x PID | TCel1 | 2,300.00 |
| Power supply 2 for TCEorg, 2x PID | TCel2 | 3,100.00 |
| Supply & thermocouple plug 4m | ST4 | 260,00 |
| Crucible quartz glass OD5mm open | CQ5 | 40.00 |
| Crucible quartz glass OD5mm with aperture | CQ5a | 60.00 |
| Crucible quartz glass OD3mm open | CQ3 | 40.00 |
| Crucible quartz glass OD8mm open | CQ8 | 50.00 |
| Crucible quartz glass OD8mm with aperture | CQ8a | 80.00 |
| other Crucible e.g. Sapphire | | on request |
| Standard z-travel unit DN CF38, ball bearings, 170mm stroke | ZT170b | 2,630.00 |
| Compact z-travel unit DN CF38, plain bearings, 170mm stroke | ZT170p | 2,730.00 |
| VAT corner Valve CF16 | CV16 | 450.00 |
| VAT Mini gate valve CF40 | MGV40 | 1,900.00 |

Mini evaporator

| | | |
|--|--------------------------|----------|
| Point source Q5 or Q3 with double shielding and internal cable on CF16 flange, length in vacuum on request | PS-Q3-CF16 / PS-Q5-CF16* | 1,990.00 |
|--|--------------------------|----------|

Point sources

| | | |
|---|---------------|----------|
| Q3 / Q5 | PS-Q3 / PS-Q5 | 700.00 |
| A5 | PS-A5 | 900.00 |
| A3 | PS-A3 | 1,200.00 |
| S3 / S5 | PS-S3 / PS-S5 | 1,450.00 |
| Shield | PS-1s | 80.00 |
| Double Shield | PS-2s | 200.00 |
| Supply and thermocouple plug 300mm inside | PS-ST300 | 190.00 |



| Products | Order number | Net Price [€] |
|---|----------------|---------------|
| Accessories for Point sources | | |
| CF16 evaporator flange with length adapter | PS-CF16* | 390.00 |
| CF40 flange with thermocouple and supply feed through | PS-CF40** | 310.00 |
| Simple ring holder | PS-H | 70.00 |
| CF40 flange with thermocouple and supply and cooling feed through | PS-CF40C** | 360.00 |
| Cooling tank and holder | PS-C | 160.00 |
| CF40 flange with thermocouple and supply feed through flange and CF16 flange | PS-CF40/16S** | 410.00 |
| Simple ring holder | PS-H | 70.00 |
| CF40 flange with thermocouple and supply and cooling feed through and CF16 flange (for shutter) | PS-CF40/16SC** | 470.00 |
| Cooling tank and holder | PS-C | 160.00 |
| Simple supply cable with length up to 4m length according to customer requirements | PS-ST | 130.00 |
| mounting and UHV-test | | 450.00 |

*Length in UHV (flange - end of point source) possible from 92mm to 300mm according to customer requirements

** Length in UHV (flange - end of point source) possible from 75mm to 300mm according to customer requirements

E-beam heater

| | | |
|---------------------------------------|----------|-----------|
| E-beam heater | EBH | 9,680.00 |
| E-beam heater with retraction | EBH-B | 12,520.00 |
| Power plug 20kV 2.44m | EBH-S244 | 120.00 |
| Power supply HEAT3-PS RES/EB 110-230V | EBH-EI | 5,100.00 |

3-cell MBE-LEED

| | |
|---|-----------------|
| Three grid reverse LEED with power supply | on request |
| Power supplies for TCEorg | see accessories |

Latex projection pattern

| | | |
|---|-----|--------|
| Standard sample (about 4 mm x 7 mm on 0.15 mm glass) | LPP | 130.00 |
|---|-----|--------|